

# VASTU VILLAS

PCMC Approved 4 BHK Row Houses

Make space for each desire, Enjoy everything that you Aspire,  
It's more than a home that you possess, It's truly a proud new address!



Project by - Shree Vastu Reality

Making Dream homes.

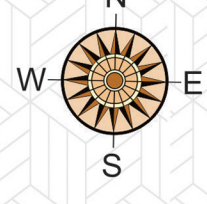


## CUT SECTION

### First Floor

### Second Floor

### Ground Floor



## SPECIFICATION

### STRUCTURE

Structure -earthquake resistance RCC framed structure.

### WALLS AND CEILING

All external and internal wall in 6 inch thick brick.  
External wall finish with single coat sand face plaster.  
Internal wall and ceiling finish with smooth coating of gypsum or pop.

### FLOORING

Designer luxury vitrified elegant flooring •  
Anti skid tiles in toilets, balcony and terrace.

### KITCHEN

Black granite kitchen platform with stainless steel sink & provision for Hob gas stove.  
Glazed tiles dado up to 2 feet above kitchen platform.  
Provision of water pure purifier & dish washer.  
Provision for exhaust fan in kitchen & toilets

### TOILETS

Glazed tile up to lintel level.  
Concealed plumbing with Jagwar/Varmora CP and sanitary fittings. .  
Hot and cold mixing unit for shower area.  
Solar water connection.

### DRY BALCONY

Dry Otta & provision for washing machine on ground.

### DOOR

Decorative main door with laminate finish.  
Internal door - laminated flush door.  
Toilet door - Waterproof door & granite frame.

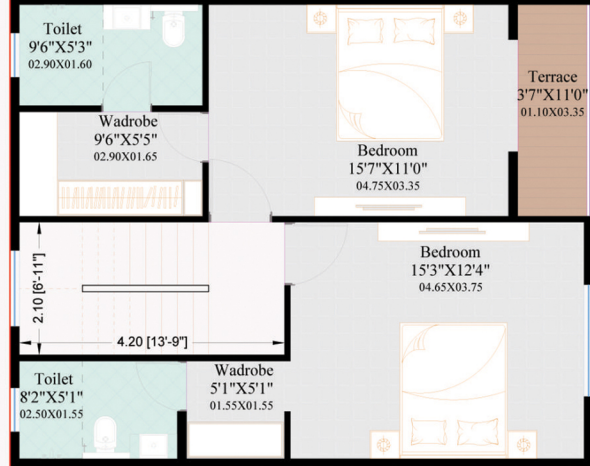
### WINDOWS

Powder coated three track mosquito net aluminum  
sliding windows in all rooms.  
Four side granite window sill.  
SS / MS Powder Coating railing for staircase &  
SS with glass railing for balcony. .  
MS grill for windows

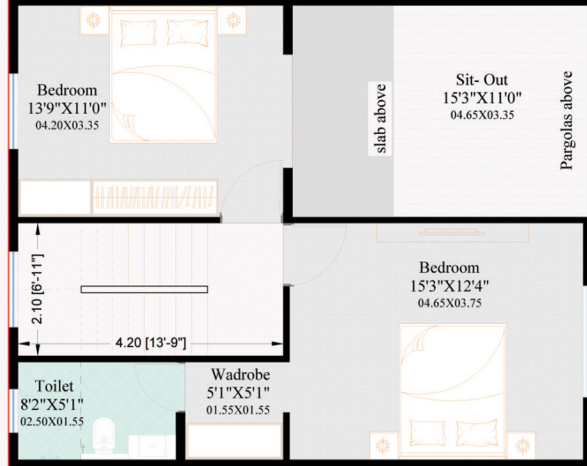
### ELECTRIFICATION

Concealed wiring in polycab wire, Modular switches in  
gold medale  
AC & TV point in all bedrooms.

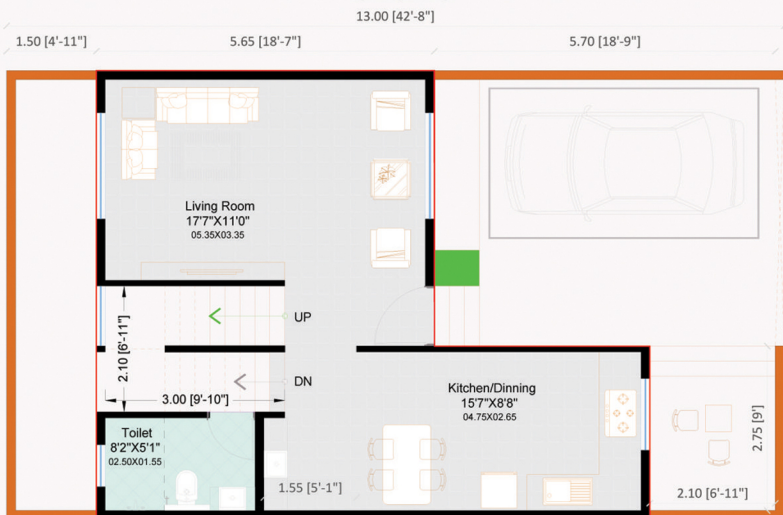
## FLOOR PLAN



FIRST FLOOR PLAN - 69.37 sq.m



SECOND FLOOR PLAN - 69.37 sq.m



GROUND FLOOR PLAN - 52.80 sq.m

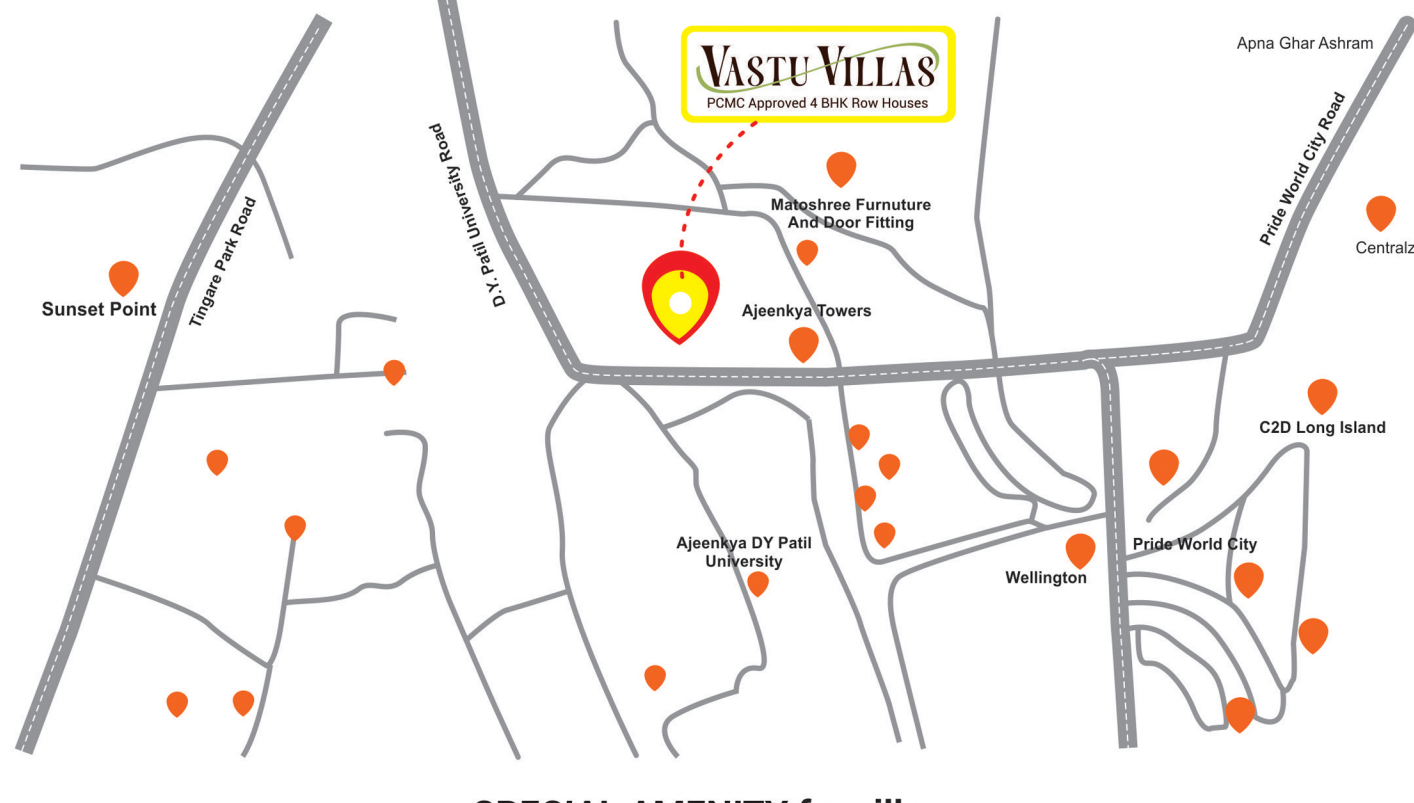
### Plot Area

1050 SQFT

### Constructor Area

2285 SQFT

## LOCATION MAP



## SPECIAL AMENITY for villas

- 1) Provision for solar water heater system & solar photovoltaic system
- 2) Vehicle charging point at parking area
- 3) Video door calling system
- 4) Letter box with attractive name plates
- 5) Side Green space at ground floor
- 6) Vastu Compliant
- 8) Attractive entrance main Gate
- 9) Internal road & footpath, street light
- 10) Tree plantation within project.
- 11) Intercom connectivity.
- 12) Children's play area.
- 13) Underground and overhead water tank for each villa.

### KEY DISTANCE

PUNE AIRPORT.....5 K.M.  
VIMAN NAGAR.....6 K.M.  
KALYANI NAGAR.....8 K.M.  
EON IT PARK .....10 KM  
COMMERSE IT YERWADA ....9 KM  
PRIDE WORLD CITY.....1 KM  
HINJWADI IT PARK.....22 KM

### SCHOOL

D.Y.PATIL INTERNATIONAL SCHOOL  
AND UNIVERSITY.....0.5 KM  
DR.MORTHOPHIS PHEO PHILUS SCHOOL.....2 KM  
PUNE INTERNATIONAL SCHOOL.....3 KM

### SHOPPING AND ENTERTAINMENT

PHONIX MARKET CITY .....8 KM  
D MART.....10 KM  
DECATHLON .....12 KM

### HOSPITAL

ORCHID HOSPITAL.....3 KM  
DR.SATHE HOSPITAL.....3.5KM  
CITY NUSRCING HOME.....5 KM



Site Address - Sr. No.: 137/1, Near Ajinkya Tower,  
Behind D.Y.Patil Collage, Charoli BK, Pune - 412105

For Contact - 9822649393, 8788369503, 9822880077, 7770088874

EMAIL - shreevastureality8808@gmail.com

Disclaimer: All Specifications, Designs, Dimensions, etc., are subject to the approval to the of the respective and the developers/reserve the right to change the specifications or features without any notice or obligation Image are for\ representation purposes only Conditionals apply. The no objection Certificate/Permission would be Provided, if reacquired.

\*Terms and Conditions Apply